



Model SG14T Tube Fired Gas Fryer



Project _____

Item number _____

Quantity _____

Model SG14T

STANDARD SPECIFICATIONS

CONSTRUCTION

- Separate welded tank design.
- Welded tank with an extra smooth peened finish ensures easy cleaning.
- Long-lasting, high-temperature alloy stainless steel heat baffles are mounted in the heat exchanger tubes to provide maximum heating and combustion efficiency.
- Standing pilot light design provides a ready flame when heat is required.
- Stainless steel front, door, side, and splashback.
- Heavy duty 3/16" (.48 cm) door hinge.

CONTROLS

- Millivolt thermostat maintains selected temperature automatically between 200°F (93°C) and 400°F (190°C-CE).
 - Integrated gas control valve acts as a manual and pilot valve, automatic pilot valve, gas filter, pressure regulator, and automatic main valve.
 - Gas control valve prevents gas flow to the main burner until pilot is established and shuts off all gas flow automatically if the pilot flame goes out.
 - Temperature limit switch safely shuts off all gas flow if the fryer temperature exceeds the upper limit.
 - New Solstice burner/baffle design.***
 - Increases cooking production.
 - Lowers flue temperature.
 - Improves working environment.
 - Generates more production per BTU.
- ***Compared to previous models.

OPERATIONS

- Two front 1 1/4" (3.2 cm) full port drains for quick draining.
- 9" (22.9 cm) clearance allows for ease of cleaning.

APPROVALS

- CSA Certified (AGA, CGA)
- NSF Listed
- MEA Approved
- CE Certified
- Australian Gas Assoc. Certified (AuGA)



Patent Pending

STANDARD ACCESSORIES

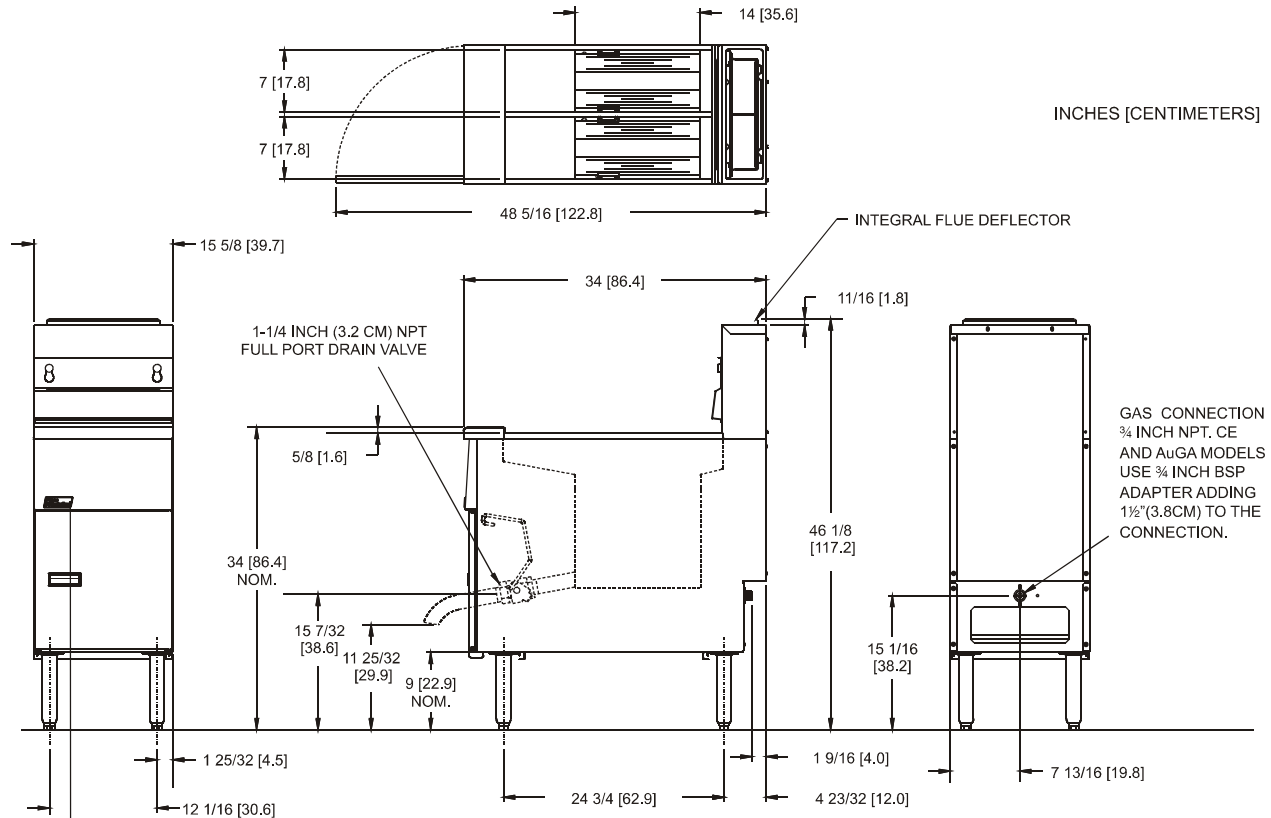
- Two nickel-plated, oblong, wire mesh baskets
- Two nickel-plated tube racks
- One drain extension
- One drain line clean-out rod
- Fryer cleaner sample
- Rear gas connection
- Manual gas shutoff
- Two 1 1/4" (3.2 cm) full port drain valves
- Built-in integrated flue deflector
- Removable basket hanger for easy cleaning
- 9" (22.9 cm) adjustable legs
- Cabinet - stainless steel front, door, and sides
- Tank - mild steel

AVAILABLE OPTIONS & ACCESSORIES

- Stainless steel tank
- Stainless steel back
- 9" (22.9 cm) adjustable casters
- Covers



Model SG14T - Tube Fired Gas Fryer



GAS REQUIREMENTS			
Gas Input Per Hour			
50,000 BTUs / 15 kW (CE) / 50 megajoules (AuGA) Per Tank			
Gas Type*	Recommended Minimum Store Manifold Pressure	Burner Manifold Pressure	*For other gas types, contact your Dealer/Distributor.
Natural Gas	7" W.C. / 17.4 mbars / 1.75 kPa	4" W.C. / 10 mbars / 1 kPa	Check plumbing/gas codes for proper gas supply line sizing.
L.P. Gas	13" W.C. / 32.4 mbars / 3.25 kPa	10" W.C. / 25 mbars / 2.5 kPa	
Clearance Information	Fryer Front	Fryer Sides, Rear, Bottom to any combustible material	Fryer Flue Area
All Models	30" (76.2 cm) min.	6" (15.2 cm) Do not Curb Mount	Do not block or restrict the flue gasses from flowing into the ventilation system.
ELECTRICAL		OIL CAPACITY	
Control Type	Voltage / Phase / Frequency	Amps	20 - 25 pounds per tank (9 - 11 kg) per tank
Millivolt	Not required	0	
SHIPPING INFORMATION		PERFORMANCE CHARACTERISTICS	
Shipping Weight	Shipping Cube	Shipping H x W x L	Cooks 41 lbs (18.6 kg) of fries per hour per tank Frying Area 7 x 14 x 4 in per tank (17.8 x 35.6 x 10.2 cm) per tank
220 lb 100 kg	19 ft. ³ .54 m ³	45 1/4 x 18 3/4 x 38 1/2 in 114.9 x 47.6 x 97.8 cm	
SHORT FORM SPECIFICATION			
Provide Pitco Model SG14T tube fired gas fryer. Fryer shall have an atmospheric burner system combined with two stainless steel heat tubes utilizing high temperature alloy stainless steel baffles. Fryer shall have a deep cool zone; minimum 28% of total oil capacity to trap burnt particles, crumbs and black specks. Fryer cooking area shall be 7" x 14" (35.6 cm x 35.6 cm) with a cooking depth of 4" (10.2 cm) per tank. Heat transfer area shall be a minimum of 300 sq. inches (1,936 sq. cm) per tank. Provide accessories as follows:			
TYPICAL APPLICATION			
Frying a wide variety of foods in a limited amount of space. Frying that requires a high volume production rate.			

